



DEWATERING PUMPS CONSTRUCTION & MINING





ALGO Profile

ALGO positions itself as not just a pump manufacturing company but as a dependable, technologically sound and one stop solution provider to meet the diverse needs of customers across the globe. Understanding the need of efficient and cost effective pumping solutions and fluid management systems ALGO is established by the veterans having more than 33 years of diversified experience.

To overcome the current challenges in providing energy efficient and complete pumping solutions and meet the requirement of discerning customers ALGO is determined to offer technologically integrated and inventive pumping systems & Solutions at affordable prices. With the vast experience gained in both domestic and international markets ALGO products are designed and produced with synergy of best in class technologies and processes with international standards. Most of its products are ISI certified and manufacturing facilities are accredited with ISO 9001 & 14001 COMPANY

ALGO stays abreast of the major changes worldwide in terms of technology and processes. This combines with the ability to understand customers' requirement allows for the development of products that meet the challenges of tomorrow.

ALGO has comprehensive range of products to cater Residential, Agriculture, Building services, Industrial & waste water segments. ALGO's highly qualified Engineers and technicians assure satisfactory service at all time

The ability & Impetus of ALGO in product development, Pricing, Promotion, e-commerce strategies will result in sustainable competitive advantages for all stake holders. We at ALGO always strive to focus on current industry trend and meet the next generation pumping requirements.

Vision Mission Values

To provide technologically integrated and ultramodern fluid management systems and solutions for diversified applications at affordable prices and become one of the pump majors globally.

To ensure that we meet all the standards of safety, efficiency, hygiene and environment protection and contribute significantly in developing systems for energy saving.

Our Values are defined by our dedication to Quality, Principles & Integrity that lead to customers' satisfaction all time and ultimate success of the company and its stakeholders.

ALGO Value Proposition

- A**ffordable Price
- L**onger Life
- G**reater Performance
- O**utstanding Service

Quality Policy

We are determined to offer reliable & Innovative products and services with high standards, Dedicated to understand & meet customers requirements on time.

We are committed to focus on introducing industry best technologies & Concepts to save energy, protect environment and to give high priority for customers satisfaction all time.



Chairman & Managing Director
ALGO GROUP OF COMPANIES

ADP SERIES



Pump Fit With Double Cartridge Seals

Shaft - Ph17 - 4.

Vacuum Assistant Priming System.

SAE Coupling With Bearing Isolator

Impeller SS316

Our Vacuum Assisted Dewatering Pumps 4", 6" & 8" are Coupled with Air Cooled Kirloskar Engine and 12" with Volvo Eicher Water Cooled Engine.

Skid Mounted & Trolley Mounted

Specification

Model	ADP 100/100	ADP 150/150	ADP 200/200	ADP 300/300
Pump Size	4"	6"	8"	12"
Power	12kW	22kW	49kW	55kW / 150kW
Speed	1500 / 1800 rpm	1500 / 1800 rpm	1500 / 1800 rpm	1300 / 1800 rpm
Suc. & Del.	100 mm	150 mm	200 mm	300 mm
Impeller Type	Closed Impeller			Semi open Impeller
Solid Handling	25mm	32mm	38mm	100mm
Engine Power	19BHP - 1500 rpm	31BHP - 1500 rpm	65BHP - 1800 rpm	231BHP
Engine Model	HA 294T	HA 394T	HA 494T	6SL9088TA
Engine Type	2 Cylinder - Air Cooled	3 Cylinder - Air Cooled	4 Cylinder - Air Cooled	6 Cylinder - Water Cooled
Vacuum System	Venturi / Diaphragm	Venturi / Diaphragm	Venturi / Diaphragm	Diaphragm
Max. Head	22/31m	23/34m	23/35m	60m
Max. Flow	180m ³ /h	300m ³ /h	500m ³ /h	1400m ³ /h
Efficiency	60%	75%	75%	76%
Priming	60 - 70 CFM			

Materials of Construction

Tee Piece	SG 500/7	Front Wear Plate	SG 500/7
Air & Water Separator	SG 500/7	Rear Back Plate	SG 500/7
Pump Casing (Volute)	SG Iron 500	Pump Shaft	SS - PH - 17 - 4
Back Plate	SG 500/7	Mechanical Seal	SIC - Viton
Bell Housing to engine	SG 500/7	Bearing Housing	SG 500/7
Bell Housing to Volute	SG 500/7	Couplings	SAE 1,2,3
Impeller	SS 316	Non Return Valve	Cast Iron

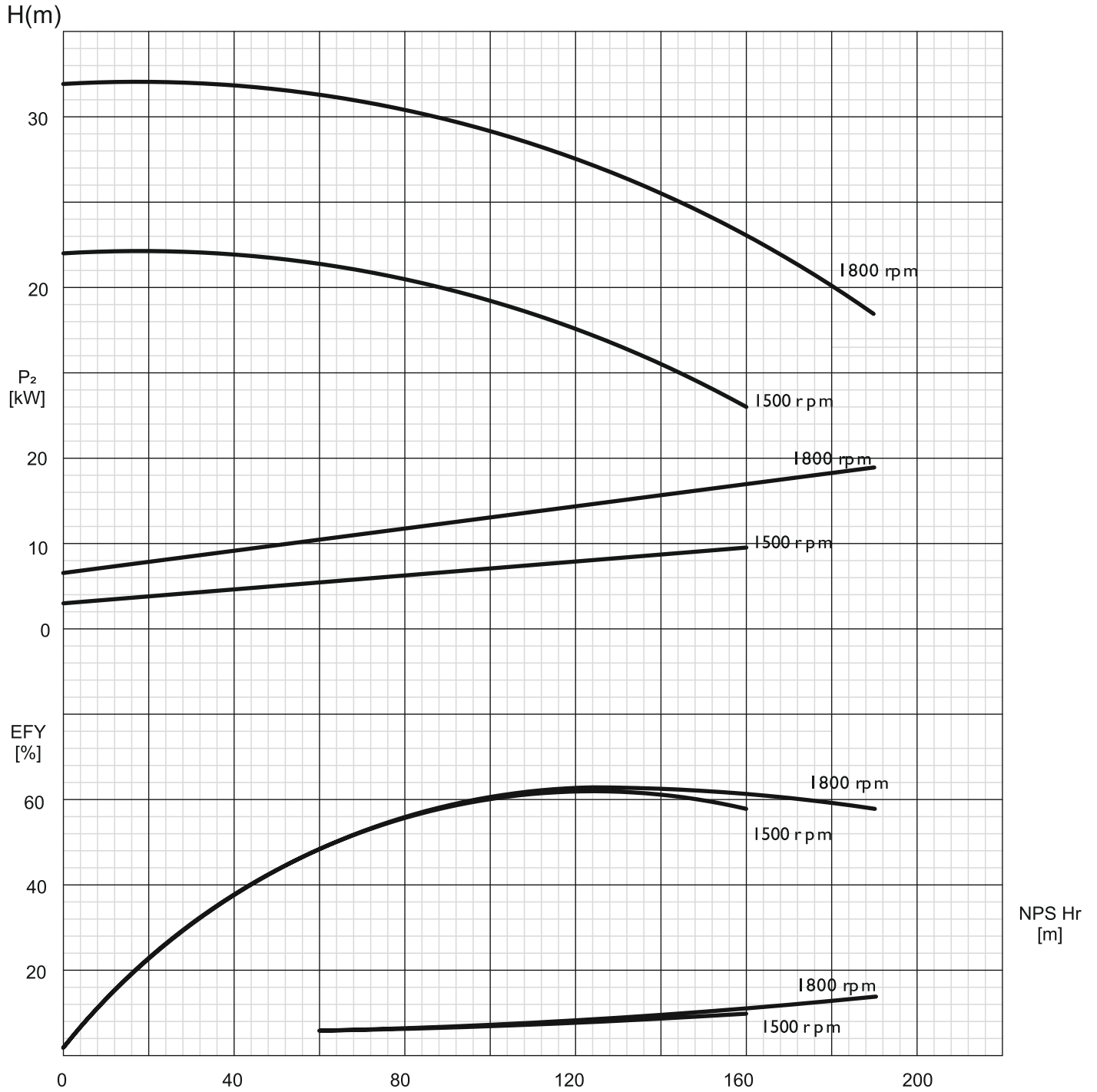
Operating Conditions

Max. Liquid Temp.	60°C
Suction lift	16 Bar
Solid Handling Capacity	12-25mm

Applications

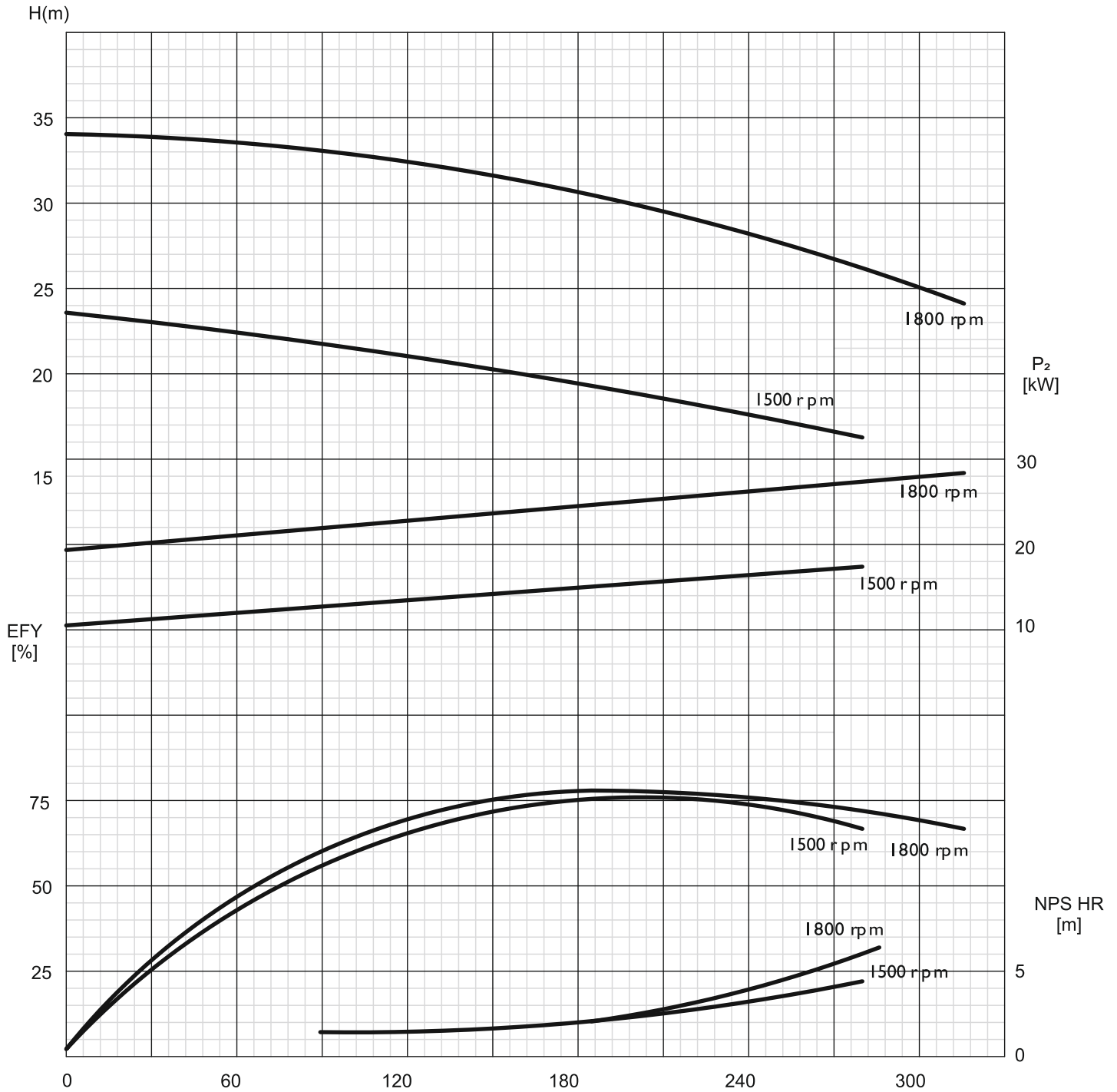
Well Point Dewatering
Construction Dewatering
Mines and Quarries
Storm Water Dewatering

Performance Curve

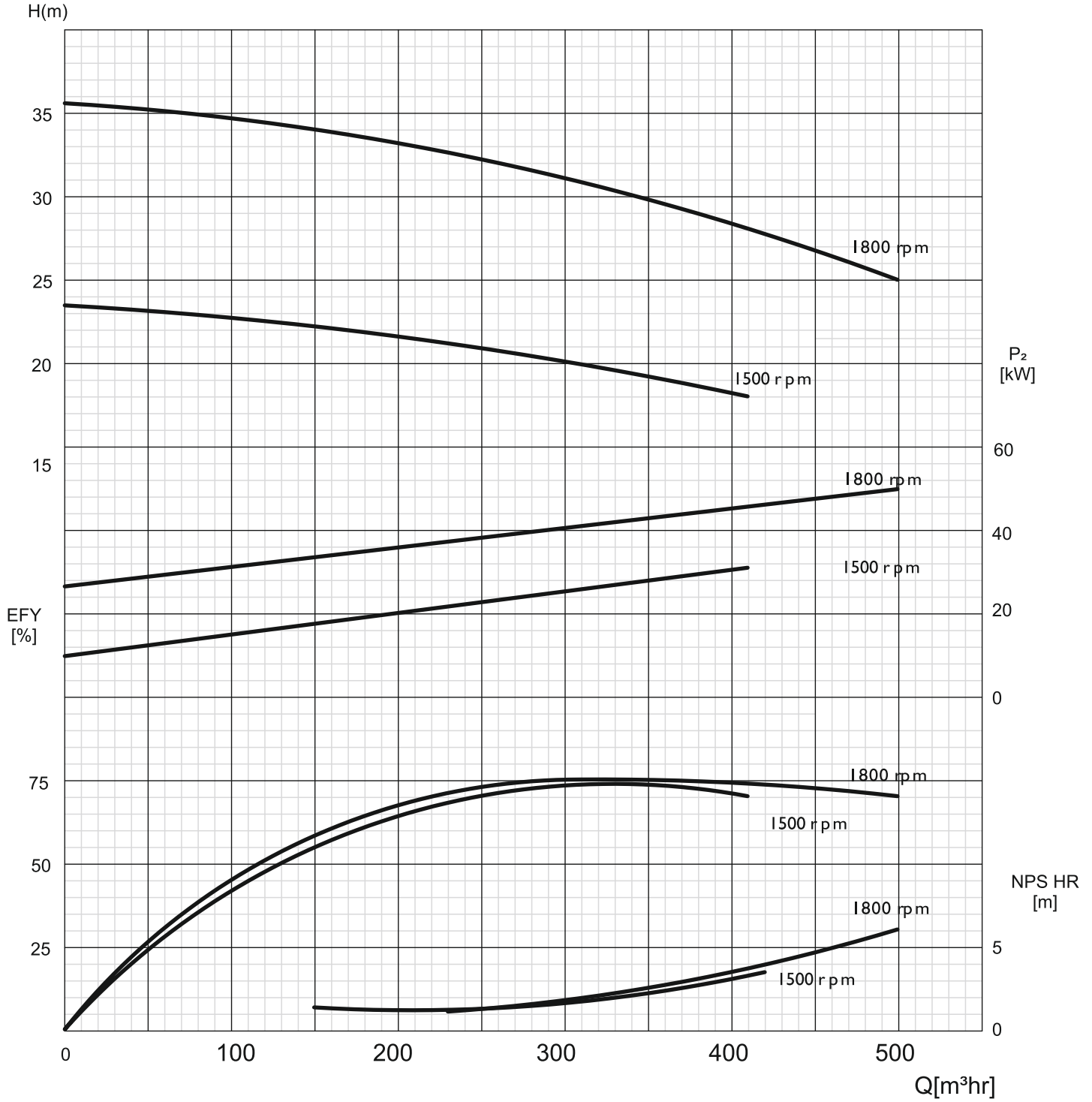


**ADP
150/150**

Performance Curve

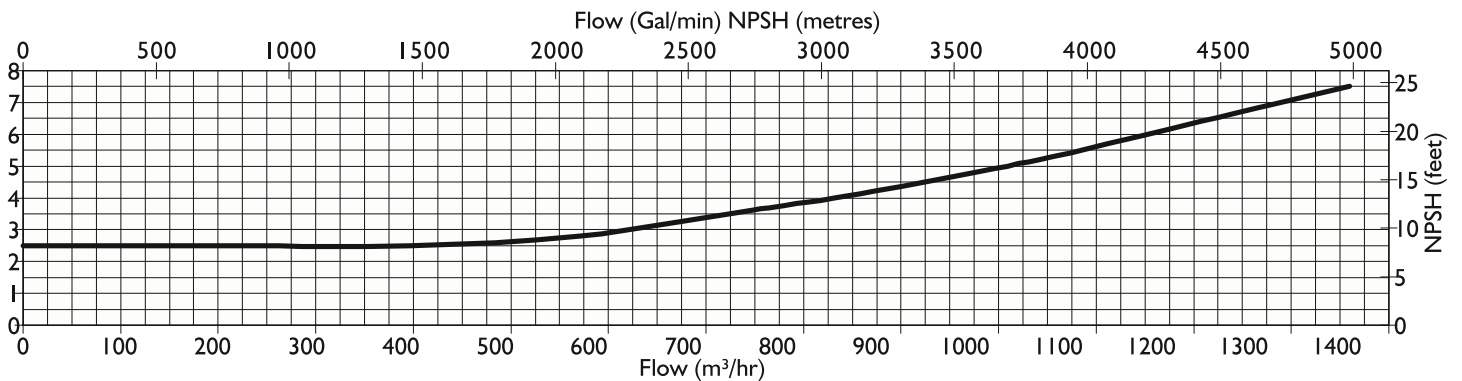
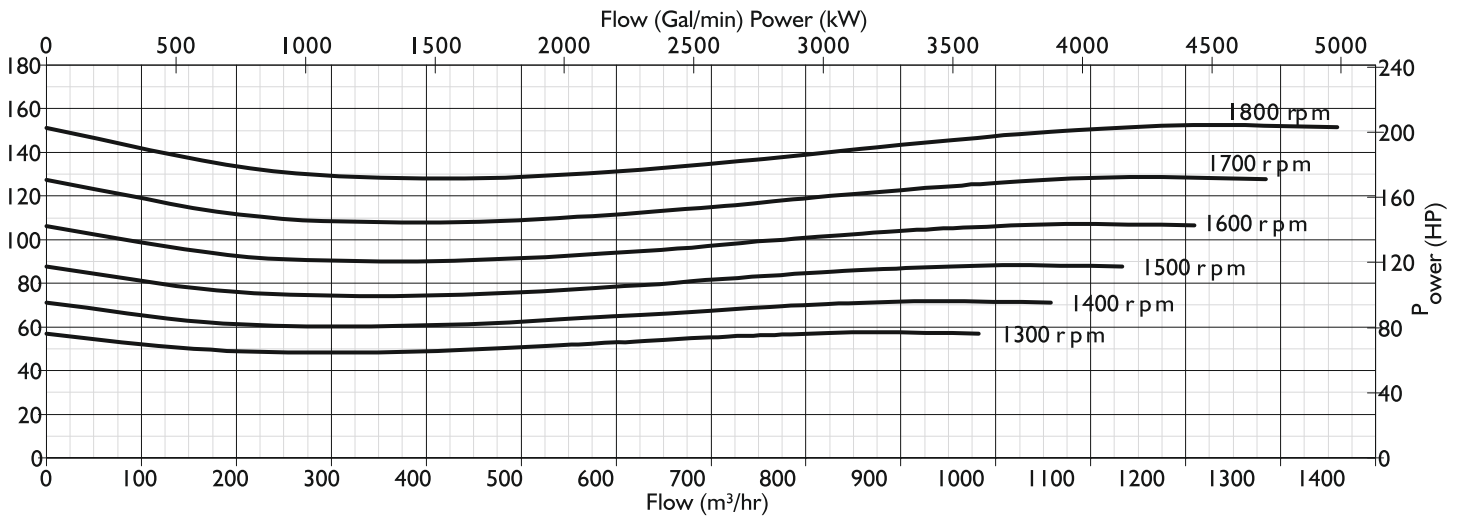
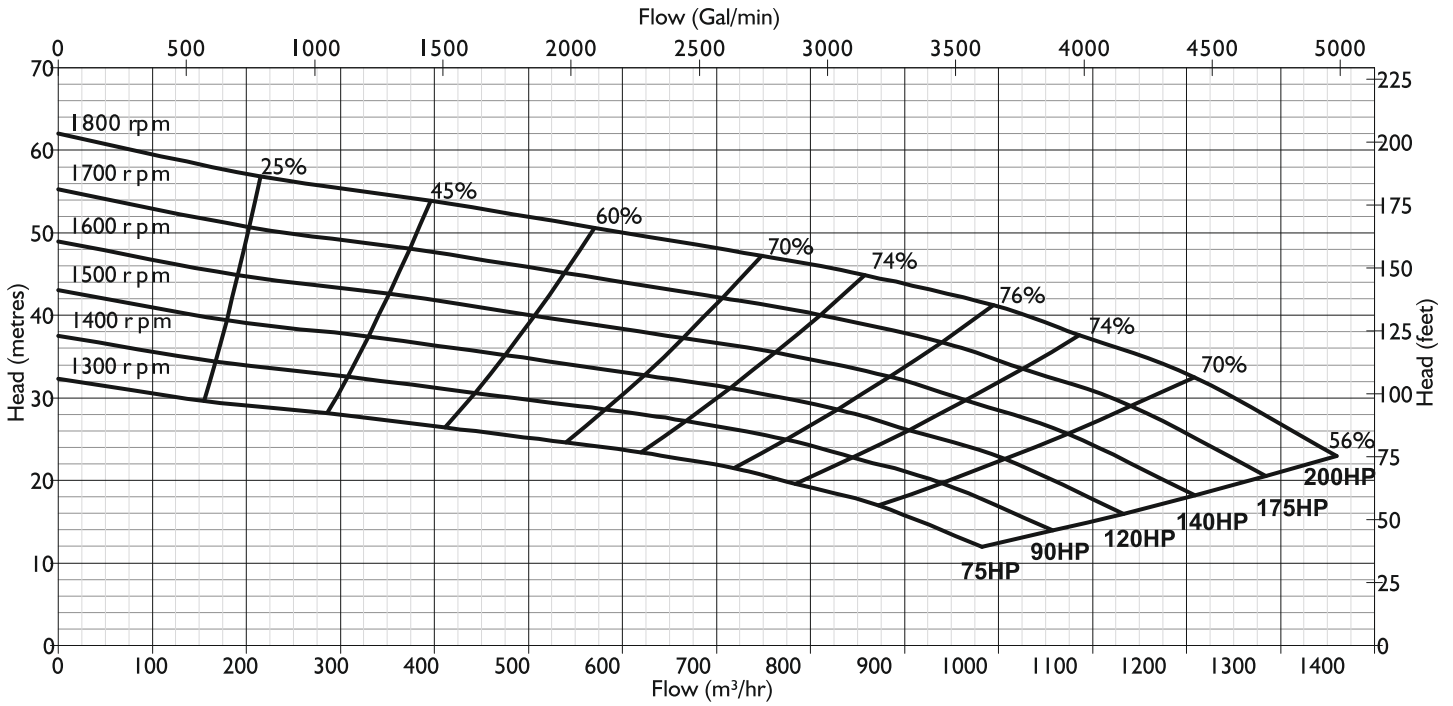


Performance Curve



**ADP
300/300**

Performance Curve



HURCULA SERIES



Specification

Model	Hercula 4/750	Hercula 6/900
Power	75kW	90kW
Speed	2900 rpm	2900 rpm
Version	3Ph-380V 50/60Hz	3Ph-380V 50/60Hz
Del. Size	4"	6"
No. of Stages	2	2
Max. Inst.Depth	25m	25m
Max. Head	175m	198m
Max. Flow	120m ³ /h	210m ³ /h
Efficiency	87%	87%

Material of Construction

All wet parts SG 500/7
 Impeller 316L
 Dual class winding
 HO7RNF
 6 wire data cable
 Twin Mechanical Seal (Tungsten Carbide)
 Stainless Steel Mesh
 Cable length 10 mtr (35mm x 4) for DOL
 Twin cable optional for star delta

Applications

Building & Construction site
 Mining
 Power & Steel Plant
 Flood

Features

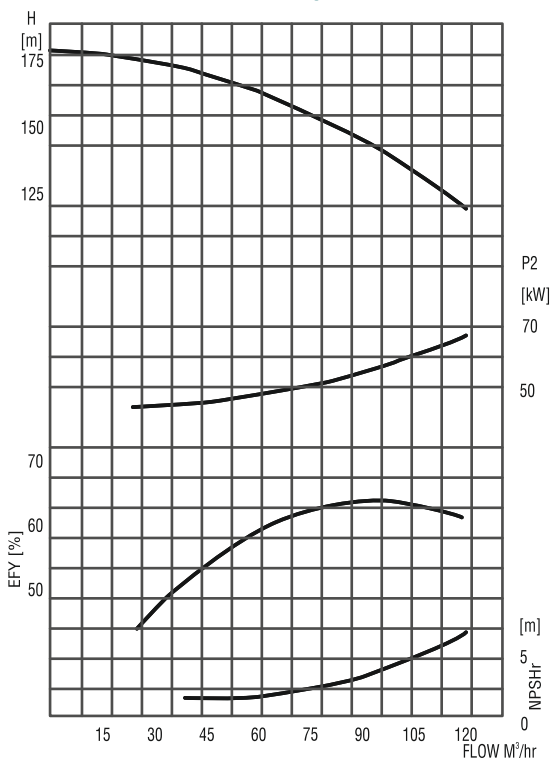
Temperature Sensor
 Moisture Sensor - Mechanical Seal
 4 Bearing System

Control Panel Requirement

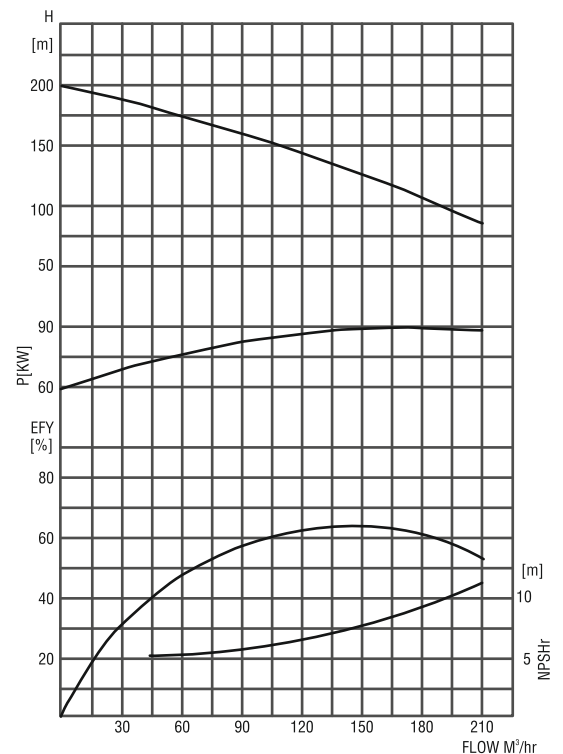
1. VFD based control system
2. Temperature relay for auto cut off
3. Moisture sensor cum relay

Performance Curve

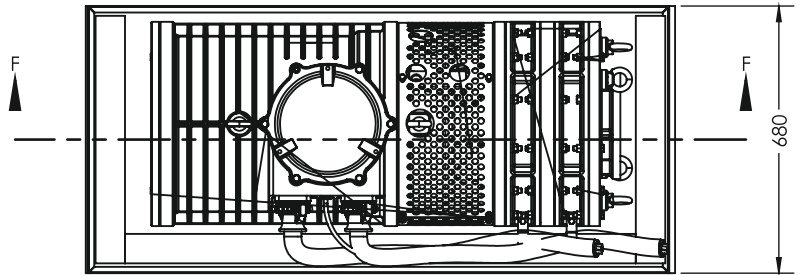
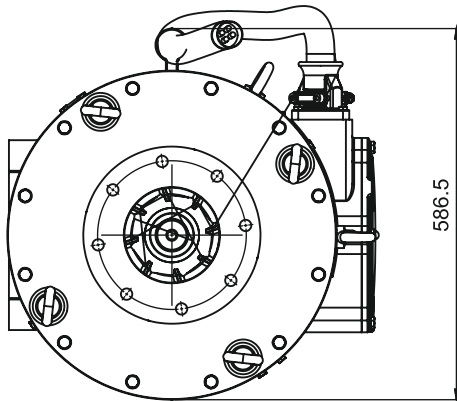
Hercula 4/750



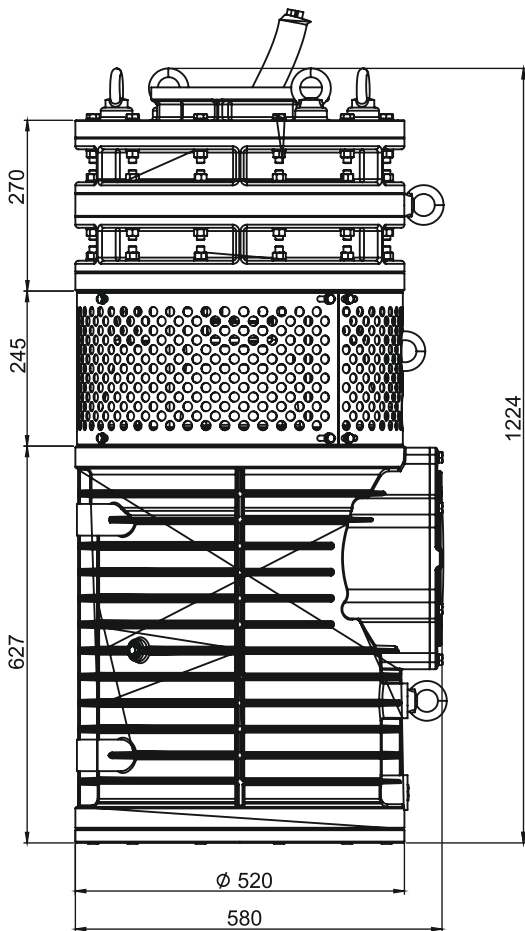
Hercula 6/900



Dimensions & Packing Information

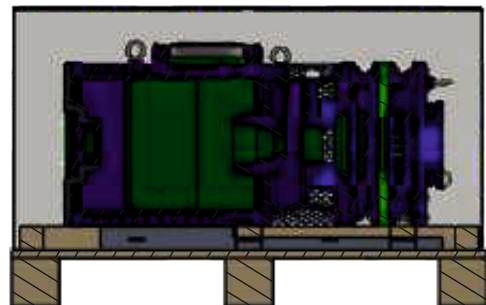
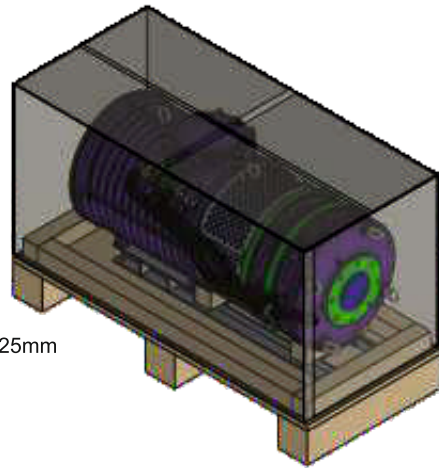


SECTION D-D
1500



630X75X75mm
2nos

1500X680X25mm
base



SECTION F-F
SEALE 1: 17

MSD SERIES



Material of Construction

- Pump Casing / Impeller/agitator/wear Plate - High Chrome
- Lip Seal Technology - Duplex Steel / SS316l
- 4 Roller Bearing Plus1 Angular Thrust Bearing
- Agitator / Impeller / Wear Plate - High Chrome
- Ductile iron hardened to 17 - 22 HRC Volute casing
- Moisture Sensor To Protect Motor Windings
- Temperature Sensor To Protect The Motor
- Shaft - SS431
- Cast Iron Parts Sg Iron 500 / 7
- HO7RNF cable

Applications

- Marine Dewatering
- Construction site
- Silt Removal
- Lime Slurry
- Mining Dewatering

Features

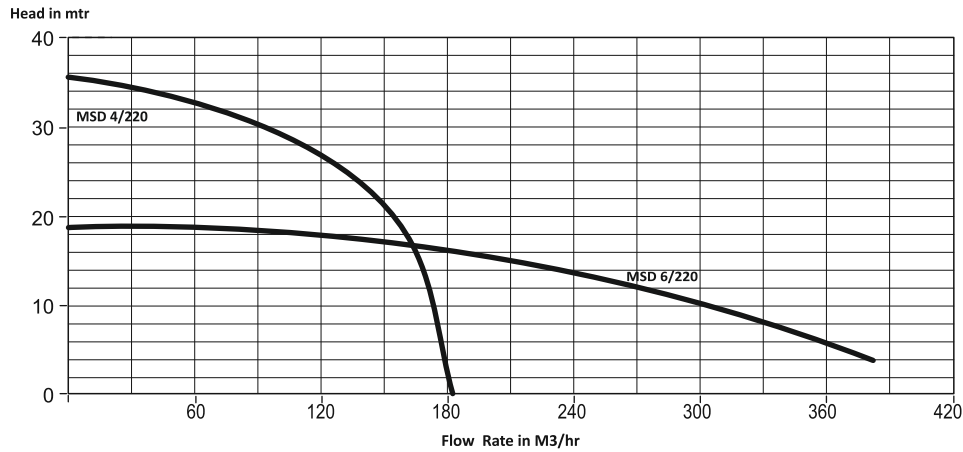
- Solids to slurry
- Prevents clogging
- Maximum submergence 15mtr

Specification

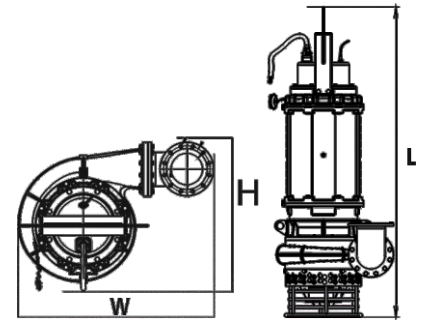
Model	MSD 4/220 MSD 6/220	MSD 4/370 MSD 6/370	MSD 6/550 MSD 8/550	MSD 10/750	MSD 10/1100
Power	22 kW	37 kW	55 kW	75 kW	110 kW
Speed	1000 rpm	1000 rpm	1000 rpm	750 rpm	600 rpm
Version	3Ph, 380V - 50/60Hz	3Ph, 380V - 50/60Hz	3Ph, 380V - 50/60Hz	3Ph, 380V - 50/60Hz	3Ph, 380V - 50/60Hz
Solid Passage	1.5" & 2.5"	1.5" & 2.5"	1.5" & 2.5"	5"	5"
Max. Head	35m	42m	48m	38m	28m
Max. Flow	380m ³ /h	480m ³ /h	460m ³ /h	860m ³ /h	920m ³ /h
Del. Size	4" & 6"	4" & 6"	6" & 8"	10"	10"
Max. Inst. Depth	40m	40m	40m	40m	40m

MSD SERIES

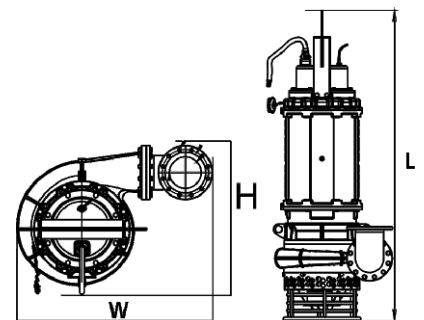
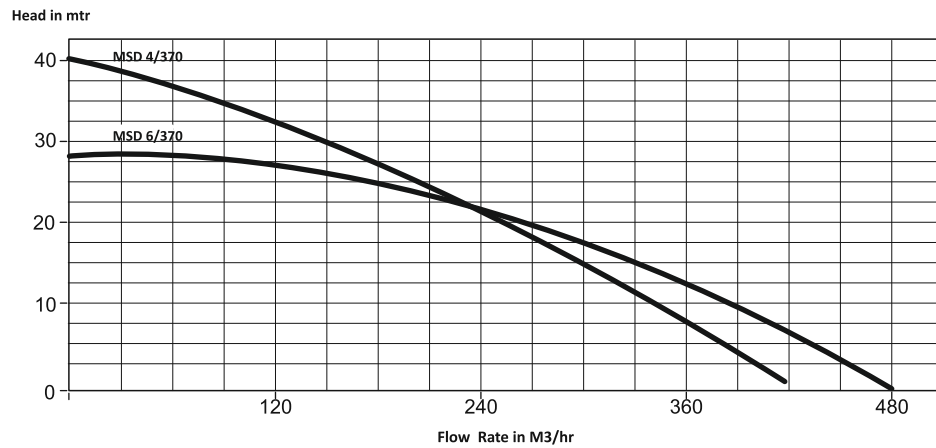
Performance Curve



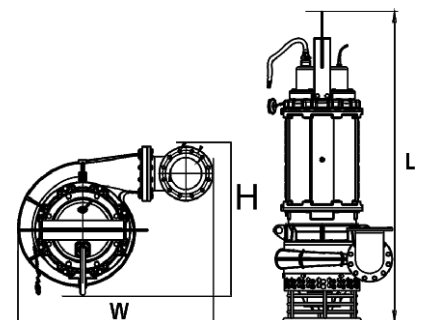
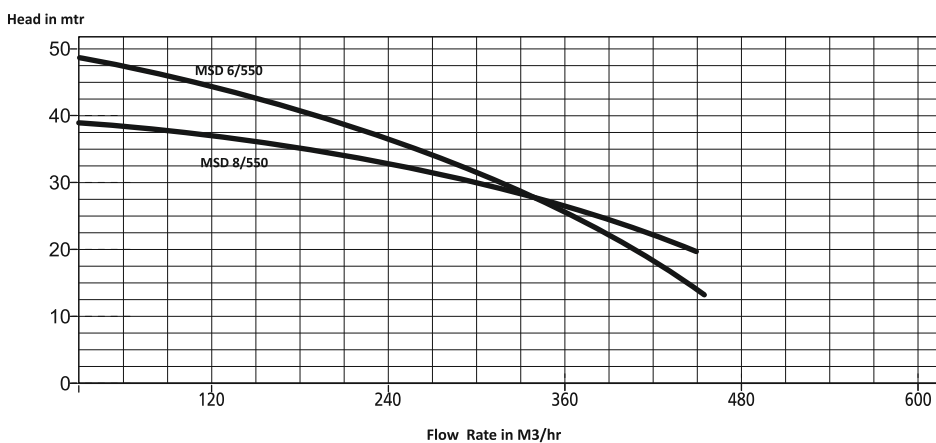
Dimensions (mm)



Model	H	L	W	Weight Kg
MSD 4/220	765	1260	850	760
MSD 6/220	775	1505	865	790



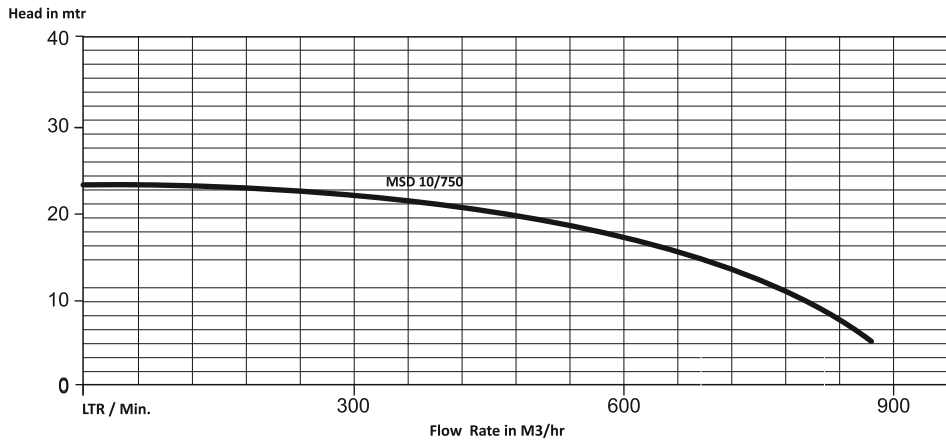
Model	H	L	W	Weight Kg
MSD 4/370	885	1900	1005	975
MSD 6/370	860	1900	960	990



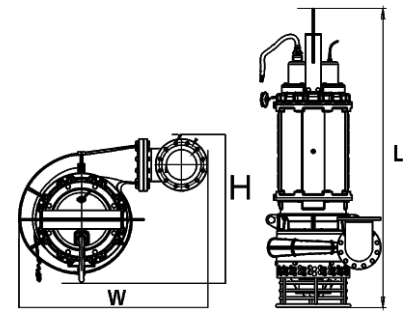
Model	H	L	W	Weight Kg
MSD 6/550	910	1950	1100	1200
MSD 8/550	915	1950	1100	1250

MSD SERIES

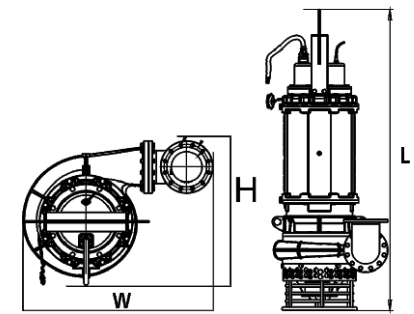
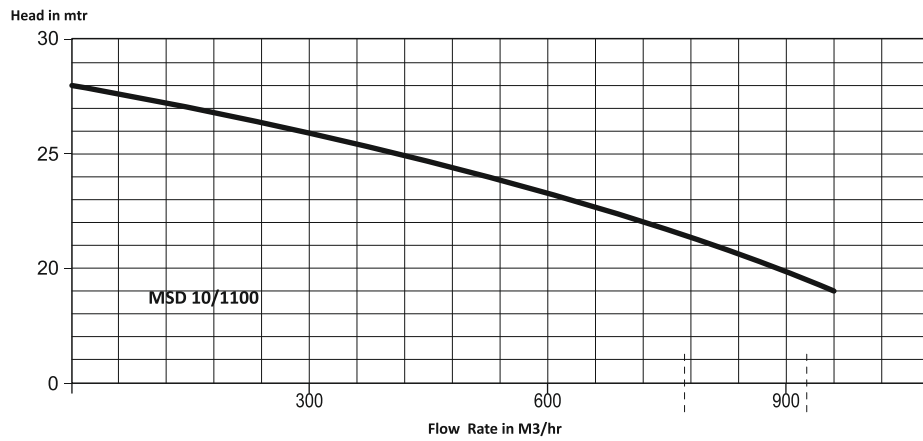
Performance Curve



Dimensions (mm)

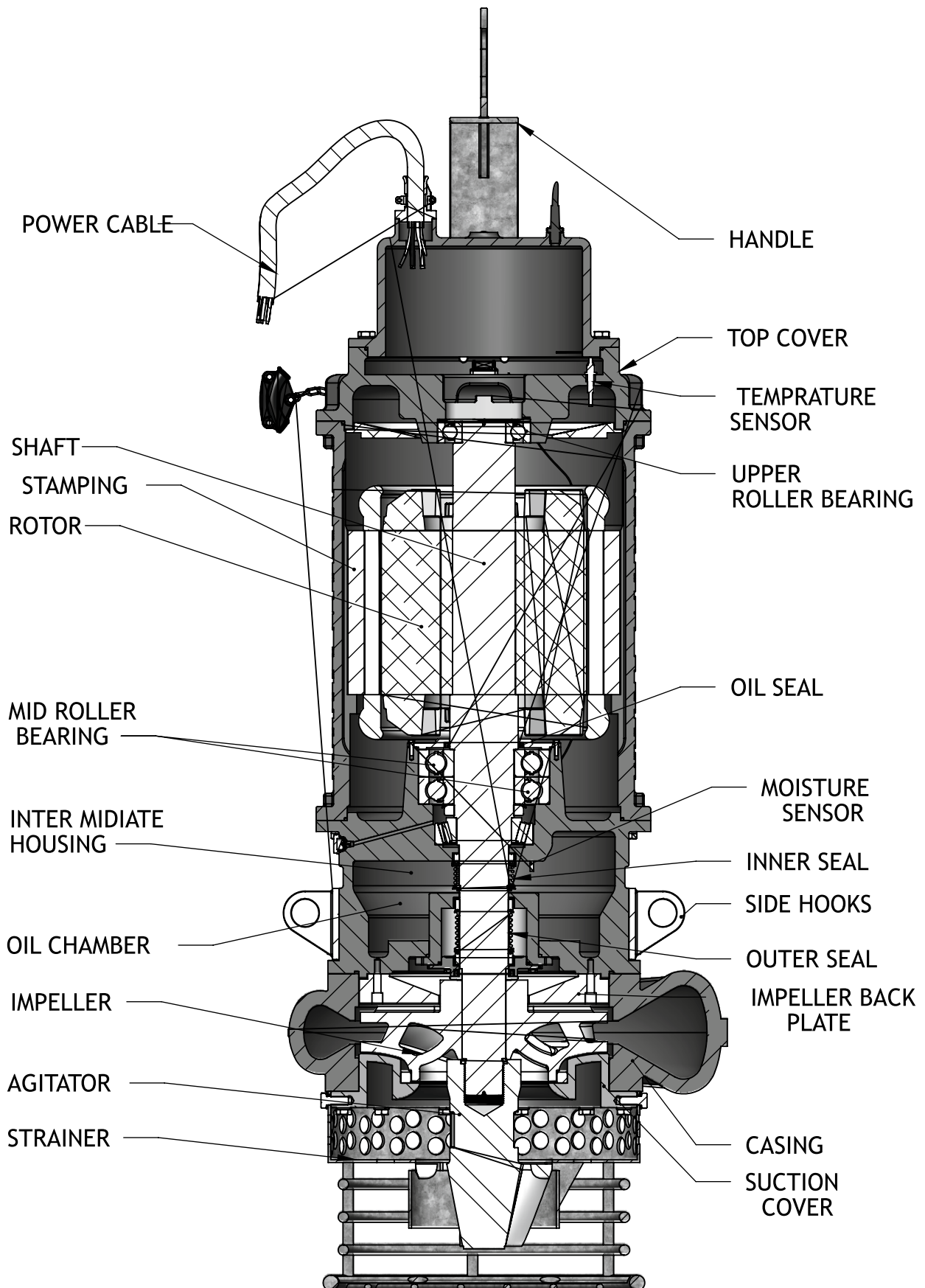


Model	H	L	W	Weight Kg
MSD 10/750	1345	2200	1475	2700



Model	H	L	W	Weight Kg
MSD 10/1100	1330	2925	1595	3500

Sectional Drawing



ESD SERIES



Specification

Power	1 & 125 HP
Speed	650 to 2900 rpm
Version	3Ph 380V, 50Hz
Duty	S1 (continuous)
Insulation Class	IP 68
Head Range	4 to 62 m
Flow Range	41 to 21248 lpm

Materials of Construction

Pump Casing	Cast Iron
Impeller	Ductile Iron
Shaft	40 Cr Alloy Steel
Shaft sleeve	40 Cr Alloy Steel
Seal	Gland Packing / Mechanical seal
Replaceable wear plate	Carbon Steel
Removable cover plate	Cast Iron
Seal plate	Cast Iron

Operating Conditions

Max. Liquid Temp.	7m
Suction lift	110°C
Solid Handling Capacity	40°C

Applications

- Industrial & Sewage applications
- Municipal Sewage Water
- Construction, Mining and Industrial
- Dewatering
- Portable Dewatering

Performance Table

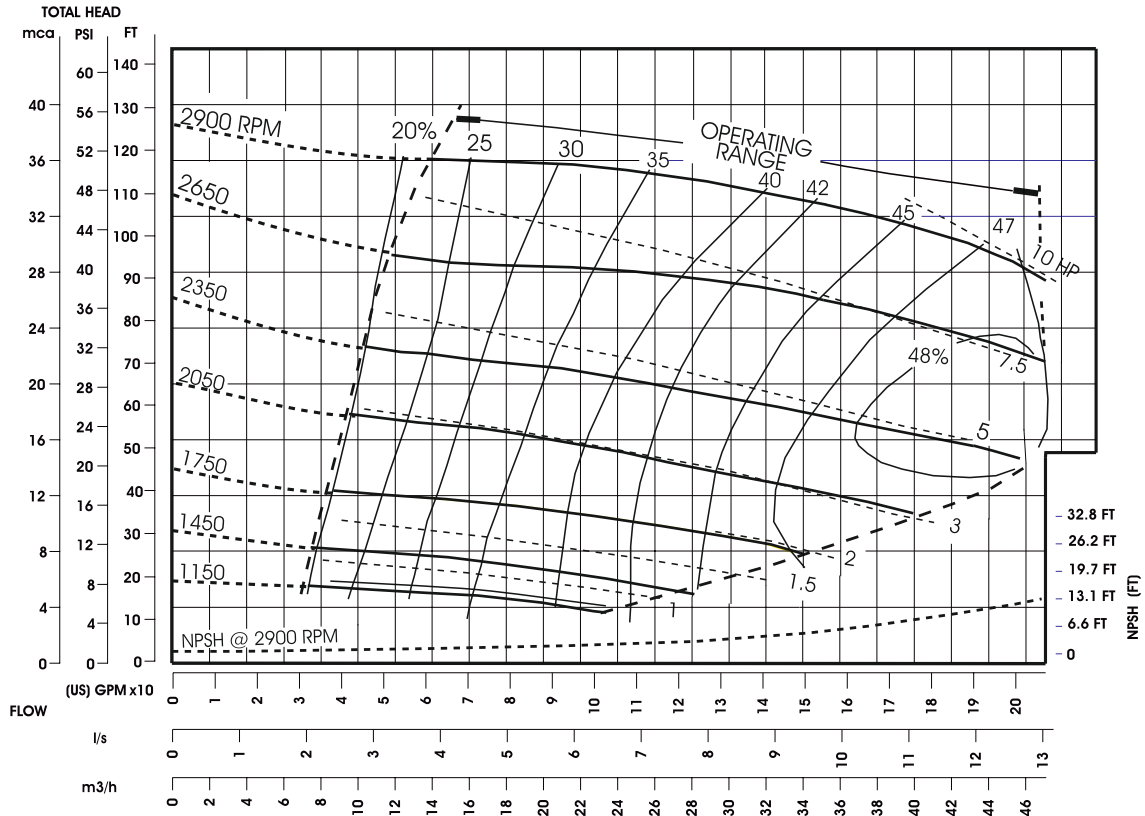
Impeller Type	Open Double Channel Impeller					
Model	ESD-50D	ESD-80D	ESD-100D	ESD-150D	ESD-200D	ESD-250D
Pump Size	2"x2"	3"x3"	4"x4"	6"x6"	8"x8"	10"x10"
Head Range (m)	4-36	2-35	2-36	2-33	4-34	3-39
Flow Range (lpm)	120-780	41-1760	250-2705	200-5478	664-9960	913-12948
Speed (rpm)	1150-2900	650-2150	650-1950	650-1550	650-1350	650-1450
Power Range (HP)	1-10	1-20	1-30	2-40	7.5-7.5	10-100
Solid Passage (mm)	44.45	63.5	76.2	76.2	76.2	76.2
Max. Suction Lift (m)	7.6	7.6	7.6	7.6	7	6.7

ESD SERIES

Performance Curve

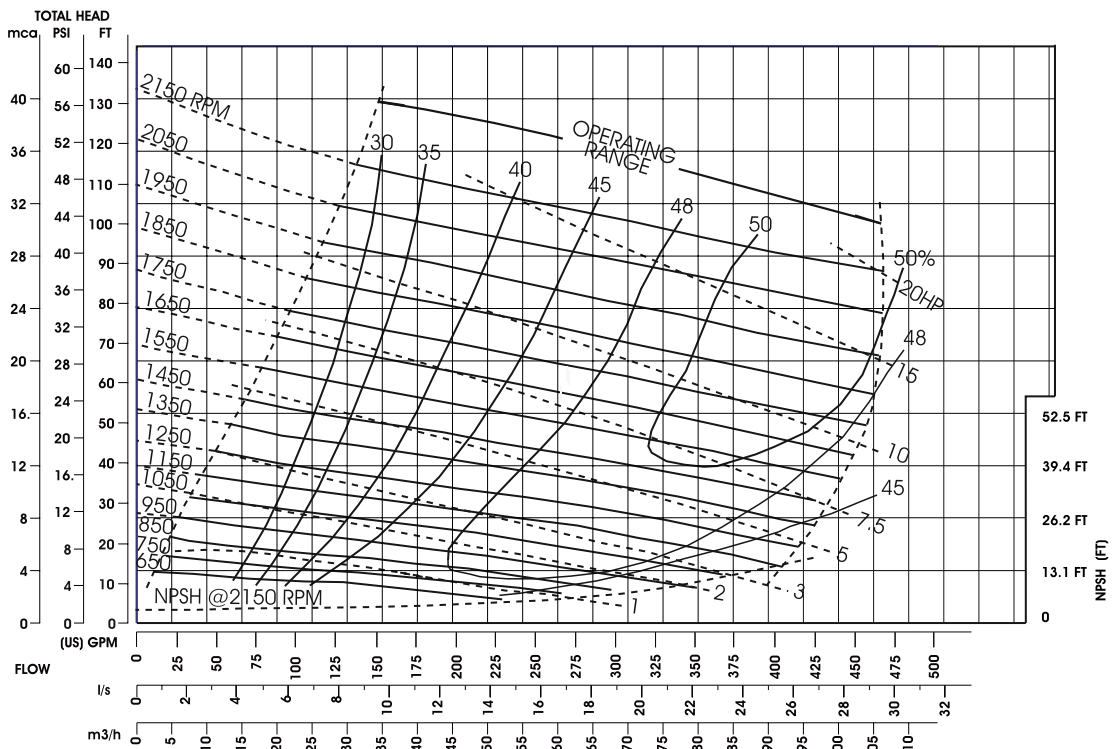
ESD-50D

2" x 2"



ESD-80D

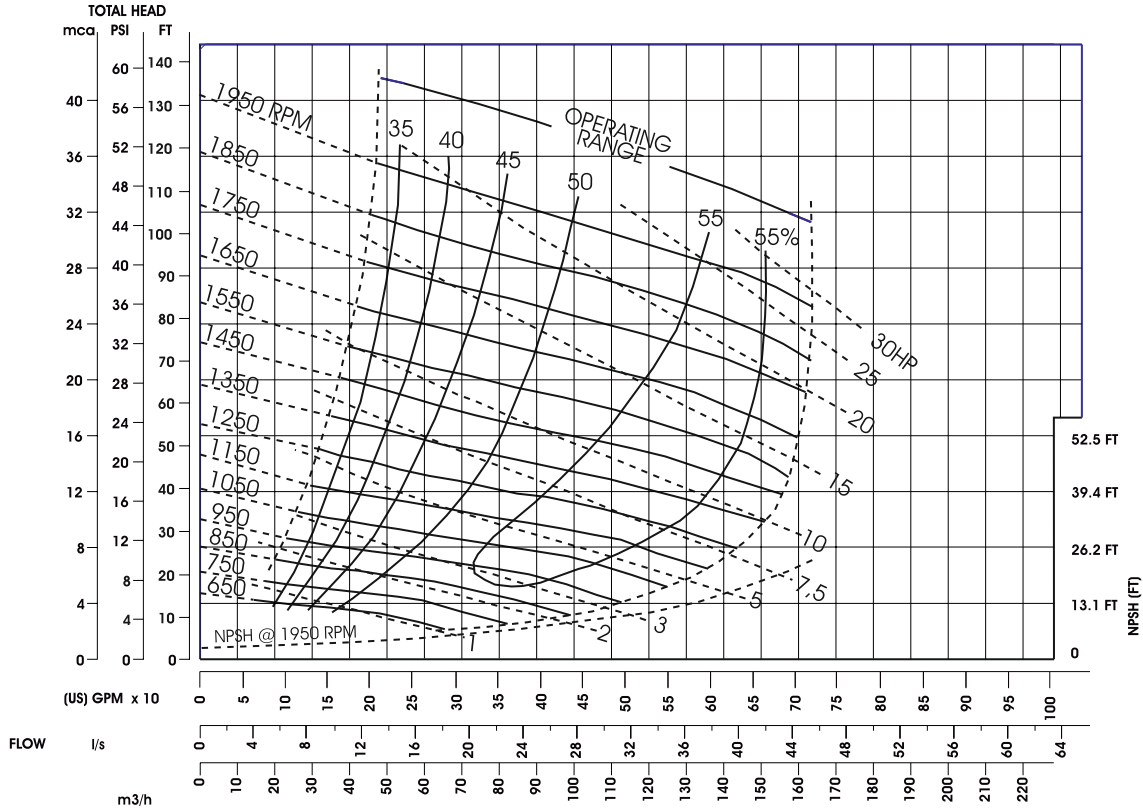
3" x 3"



Performance Curve

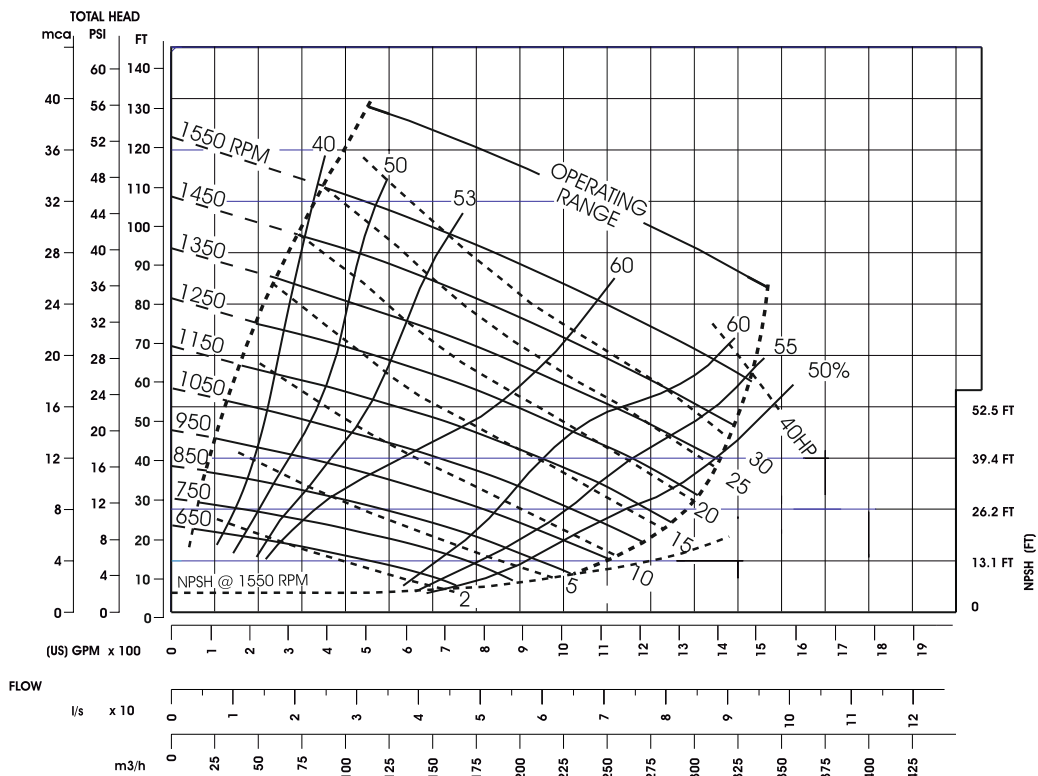
ESD-100D

4" x 4"



ESD-150D

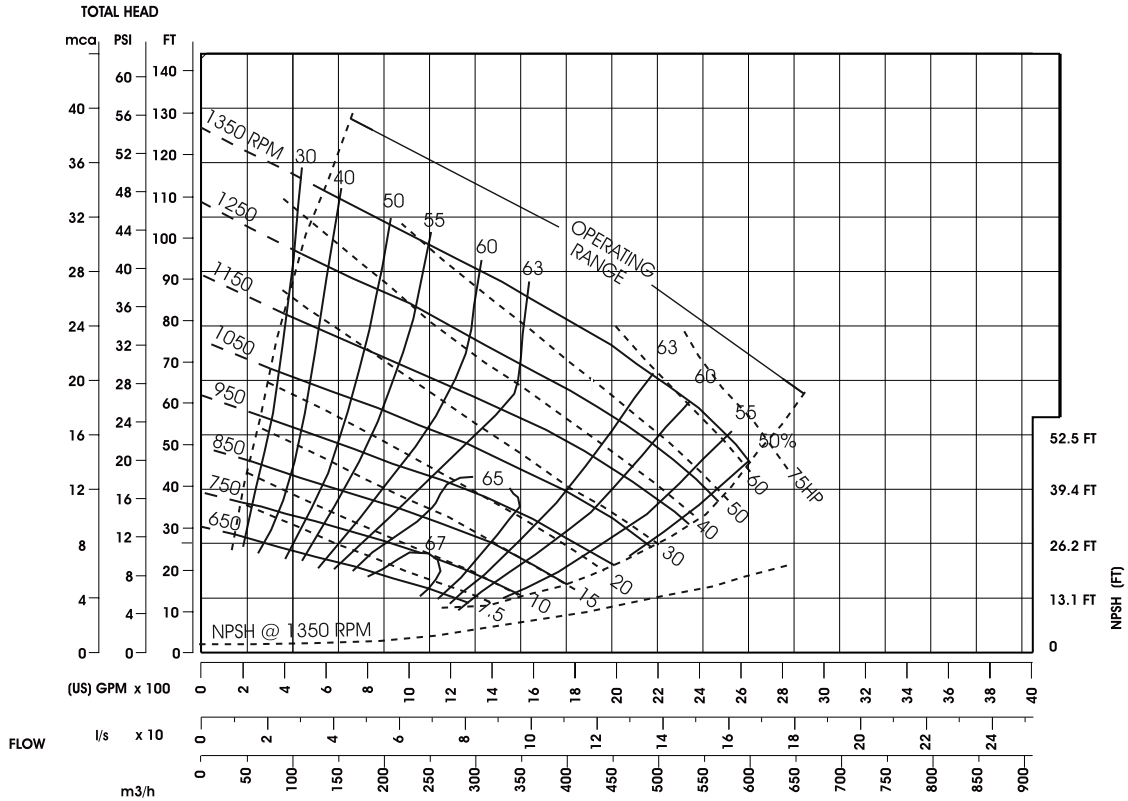
6" x 6"



Performance Curve

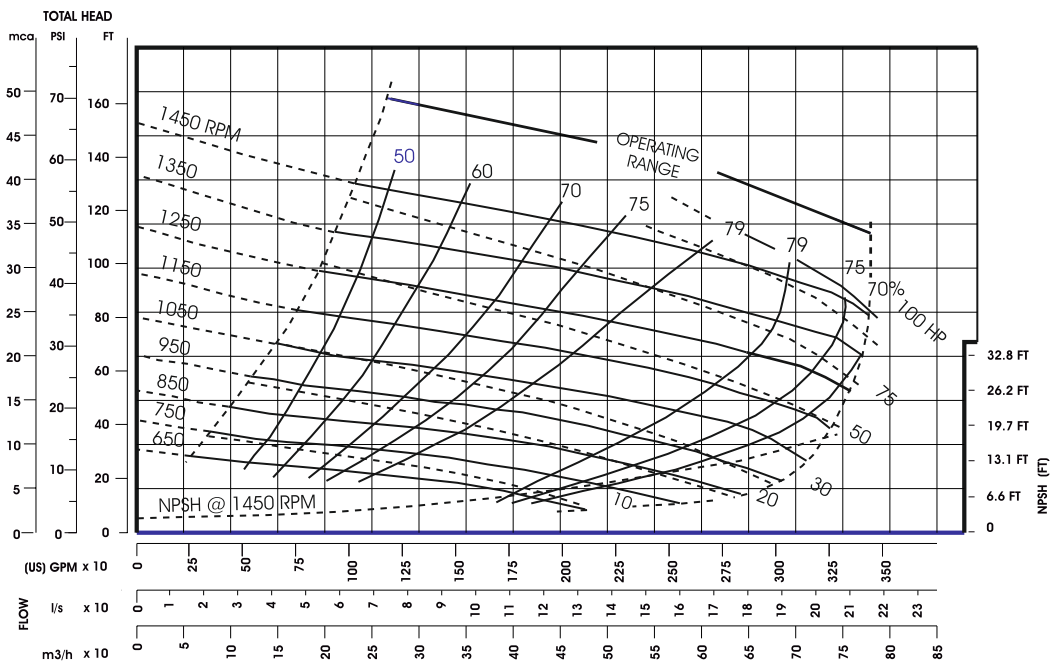
ESD-200D

8" x 8"



ESD-250D

10" x 10"



**BLORA-D
SERIES**



Specification

Power	1 to 50 HP
Speed	2900rpm
Version	3Ph 3800V, 50Hz
Duty	S1 (Continuous)
protection	IP 68
Insulation Class	F
Head Range	2 to 65m
Flow Range	65 to 7650lpm

Materials of Construction

Pump Casing	SS 202
Motor Housing	SS 202
Impeller	Cast Iron
Shaft	SS 410
Seal	Tungsten Carbide vs Tungsten Carbide

Operating Conditions

Max. Liquid Temp. 50°C

Applications

- Building & Construction site
- Mining
- Power & Steel Plant
- Flood

Performance Table

Model	HP	kW	Outlet Size (mm)	Solid Size (mm)	Discharge in lpm	Discharge in lpm												
						2	4	6	8	10	14	18	24	28				
BloRaD I-10DT	1	0.75	50	12	Discharge in lpm	400	352	304	240	144								
BloRaD I-15DT	1.5	1.1	50	15		800	660	460	160									
BloRaD II-15DT	1.5	1.1	50	12		470	430	385	335	270	70							
BloRaD I-20DT	2	1.5	50	15		900	800	625	440									
BloRaD II-20DT	2	1.5	50	15		550	525	485	437	380	225							
BloRaD I-30DT	3	2.2	50	12			400	385	370	360	325	275	175	65				
BloRaD I-30FT	3	2.2	75	15				880	800	700	600	370	120					
BloRaD I-50DT	5	3.7	50	12				750	720	690	650	580	480	270	105			
BloRaD I-50FT	5	3.7	75	15					1100	1070	1050	1000	820	590				
BloRaD I-75FT	7.5	5.5	75	15						1375	1305	1250	1180	1045	875	500	170	
BloRaD I-100FT	10	7.5	75	15							2400	2300	2200	2100	1875	1575	1000	500

BLORA-D SERIES

Performance Table

Model	HP	kW	Outlet Size (mm)	Solid Size (mm)		Discharge in lpm															
						4	8	12	16	20	24	28	32	36	40	45	50	55	60	65	
BloRaD-50GT	5	3.7	100	20	Discharge in lpm	2200	1760	920												65	
BloRaD-75GT	7.5	5.5	100	20		2400	2100	1400													
BloRaD-100GT	10	7.5	100	20		2400	2200	2000	1750	1400	1000	500									
BloRaD-125GT	12.5	9.3	100	20		2500	2350	2150	1950	1700	1400	1000	550								
BloRaD-150GT	15	11	100	20		2800	2600	2400	2175	1950	1700	1400	1100	750	350						
BloRaD-200GT	20	15	100	20			2640	2550	2400	2220	2040	1860	1620	1380	1080	660	180				
BloRaD-100IT	10	7.5	150	30		3900	3200	2000													
BloRaD-125IT	12.5	9.3	150	30		4500	3850	2800	1250												
BloRaD-150IT	15	11	150	30		4500	3950	3350	2600	1800	950										
BloRaD-200IT	20	15	150	30		5000	4500	4000	3400	2750	2000	1200	400								
BloRaD-250IT	25	18.5	150	25				3800	3500	3150	2800	2400	2000	1600	1100	450					
BloRaD-300IT	30	22	150	25				4000	3800	3500	3200	2800	2500	2100	1700	1100	500				
BloRaD-350IT	35	26	150	25				4400	4200	3900	3650	3300	3000	2600	2200	1650	1050	550			
BloRaD-400IT	40	30	150	35			7250	6050	6080	5350	4550	3190	2395								
BloRaD-500IT	50	37	150	35			8150	7875	6950	6200	5650	4850	4100	3387	2134	1334					
BloRaD II-400IT	40	30	150	30			4350	4080	3890	3710	3550	3370	3120	2880	2580	2300	1850	1350	600		
BloRaD II-500IT	50	37	150	30					4400	4220	4100	3990	3690	3505	3290	3050	2350	2350	1890	1400	700

				Discharge in lpm									
						10	12	14	16	18			



Specification

Power	5.5 to 30 HP
Speed	1450rpm
Version	1Ph 230V 3Ph 3800V
Duty	S1 (Continuous)
Insulation Class	F
Head Range	5 to 30m
Flow Range	50 to 5633lpm

Materials of Construction

Pump Casing	Cast Iron
Motor Housing	Cast Iron
Impeller	High Chrome Alloy
Shaft	SS 304 / SS 410
Seal	Sic-Sic / Sic-Sic

Applications

Construction
Mines & Quarries
Sewage Treatment plants

Operating Conditions

Max. Liquid Temp. 40°C

Performance Table

Model	HP	kW	Outlet Size (mm)	Solid Size (mm)	Discharge in lpm													
					5	6	7	8	10	12	14	16	20	22	24	26	28	30
RONDA-55	5.5	4	80	30	1490	1360	1330	1195	996	660								
RONDA-80	8	6	100	30		1990	1820	1660	1490	1160	830							
RONDA-120	12	9	150	30			2820	2660	2407	2160	1826	149						
RONDA-200	20	15	200	30				5310	4980	4650	3984	3320	1660					
RONDA-300	30	22	200	30				5644	5480	5310	4980	4650	3984	3650	3320	2660	1990	1330

FLAT HOSE



Applications

Construction Sites
Mines And Quarries
Ships & Boat Dewatering
Transferring Corrosive Chemicals & Liquids
Agriculture

Composition

Algo Flat Hose Is Composed Of Flexible PVC with Synthetic Yarn Reinforced to Provide Extra Strength.

Temp Range:

-10 °C Approx. To +70 °C Approx

Size in mm	Size id (mm)	Standard Length (mtrs.)	Wall Thickness (mm)	Working Pressure bar	Bursting Pressure Bar
25MM	26.00 ± .25	60/100	0.80	4.00	11 TO 12
32MM	32.50 ± .25	60/100	0.90	4.00	11 TO 12
38MM	40.00 ± .25	60/100	1.00	4.00	11 TO 12
50MM	52.00 ± .50	60/100	1.10	4.00	11 TO 12
65MM	65.00 ± .65	60/100	1.20	4.00	11 TO 12
75MM	76.50 ± .75	60/100	1.20	4.00	11 TO 12
100MM	102.50 ± .1.00	60/100	1.20	4.00	11 TO 12
150MM	153.50 ± .1.2	60/100	1.50	4.00	11 TO 12
200MM	202.50 ± .1.2	50/100	1.80	3.00	8 TO 9

PVC HOSE

Size in mm	Master Packing
	No of Rolls X Mtrs Per Rolls
20MM	5 X 30
25MM	5 X 30
30MM	3 X 30
38MM	3 X 30
50MM	2 X 30
65MM	1 X 30
75MM	1 X 30
90MM	1 X 30 * 1 X 27
100MM	1 X 30
125MM	1 X 30 * 1 X 15 * 1 X 18
140MM	1 X 30
150MM	1 X 15* 1 X 18
200MM	1 X 6 * 1 X 4.50

Medium Duty

Green Colour

Heavy Duty

Grey Colour

Applications

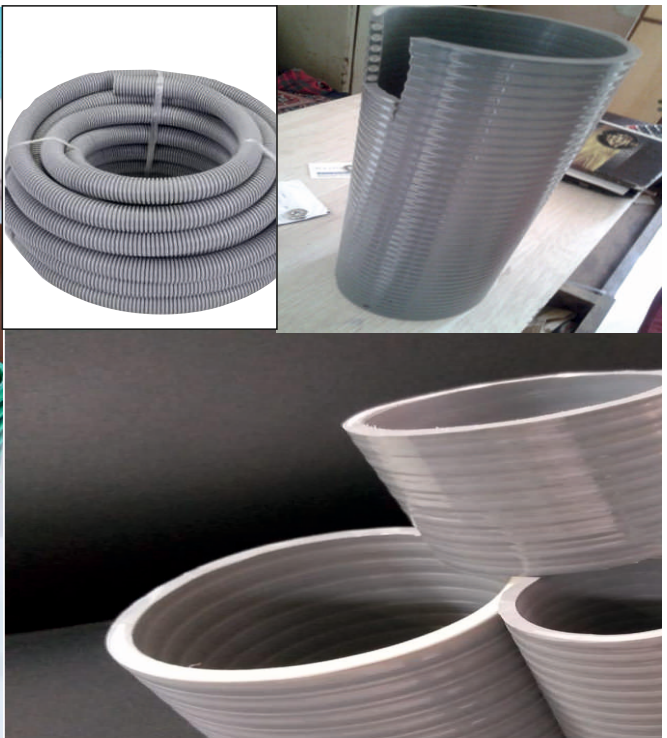
- Construction Sites
- Mines And Quarries
- Ships & Boat Dewatering
- Transferring Corrosive Chemicals & Liquids
- Agriculture

Temp Range:

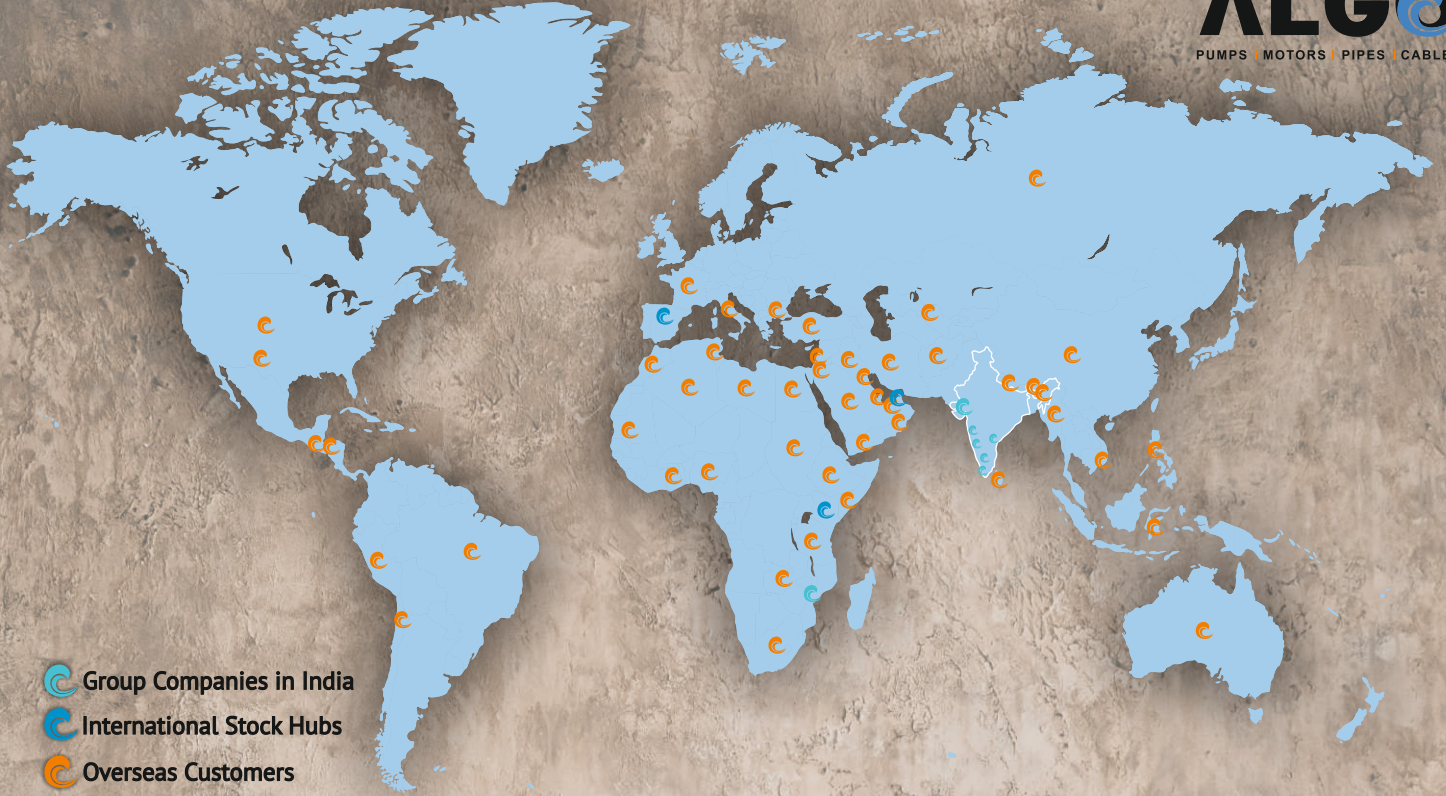
-10 °C Approx. To +70 °C Approx

GREEN COLOUR

GREY COLOUR



A series of horizontal dotted lines for writing notes.



-  Group Companies in India
-  International Stock Hubs
-  Overseas Customers

33+
Years Experience

100+
Product variants

6000+
Models

80+
Countries Export

1600+
Distributors

800+
Service Centers

10
Companies under the Group

30+
Venture Partners in India & abroad

3
International Stock Hubs

4
Times Export Award Winner

ALGO GROUP OF COMPANIES

ALGO FLUID SYSTEMS PRIVATE LIMITED

Survey No. 185, Ahmedabad-Mehsana Highway, Ghumasan Road, Chandarda, Ta- Kadi,

Dist- Mehsana - 384 450. Gujarat - India

Tel.: +91- 02764-234240 / 93164 31347 | E-mail : sales@algopumps.com

ALGO HYDRO TECH

No: 9/132-7, Kalapatti Main Road,
Kaikolapalayam, Mylappatti - Post,
Coimbatore - 641 062. Tamilnadu
Tel: +91 99761 70074
Email : salescbe@algopumps.com

ALGO HYDRO TECH

6 Ward 11 Murari Junction
Kollam Ayoor Road, Mukthala
Kollam - 691 577. Kerala
Tel.: +91 90873 70074 / 96555 00360
E-mail : saleskl@algopumps.com

ALGO AQUA TECH

43 / 2 / 2 Krushnai ware house,
Manter Wadi Urulidevachi, B/h Sai Om Petrol Pump,
Pune - 412 308. Maharashtra
Tel.: +91 74474 61552
E-mail : salespune@algopumps.com

ALGO AQUA TECH

No: 17, 5th floor, C - Building,
Gami Industrial Park, Pavane,
Navi Mumbai - 400 705. Maharashtra
Tel.: +91 91580 01551
E-mail : salesmumbai@algopumps.com

ALGO PUMP TECHNICK

3, 2 / part, Wahab Nagar, Sikh Village,
Secundrabad, Hyderabad - 500 009. Telangana
Tel.: +91 96555 00959
E-mail : salesapt@algopumps.com

ALGO FLUID TECHNIKS SA (PTY) LTD.

MIFA Industrial Park, Unit 20
399, George Street, Randjespark,
Midrand, Johannesburg, South Africa - 1682
Tel: +27108250500 Mobile: +27733576033
Email: Info@algopump.co.za
Website: www.algopump.co.za

INTL. STOCK HUBS : NAIROBI - KENYA, VALENCIA - SPAIN

